



# Silver Birch Class (Year 3&4)

## Term 1 Class Topic Web



### Mathematics

Number and Place Value  
Addition and Subtraction  
Counting and Comparing  
Exploring Time



### English

Focus Text 'Tuesday'

Genres: Recount  
Story writing- alternative ending

Class read- The Abominables



### Science

States of Matter



### Computing

Creating media- photo editing



### PSHE&C

Being me in my world



### RE

What do Christians learn from  
the creation story?



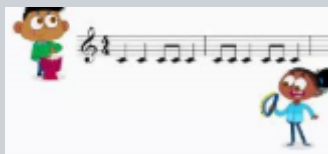
### Languages (French)

Greetings  
Numbers 1-20  
Months



### Music

Musical structures



### Art

L.S. Lowry



### PE

Football  
Dance



PE kits needs to be worn on  
Thursday and Friday

### History

How has Swindon changed from  
a small market  
town to a large  
modern town?



## Class Updates & Notices

Dear Parents and Carers,

Welcome to Silver Birch class. I hope you all had a wonderful summer break. As with last year, you will continue to receive regular updates through our termly class newsletter, which will include curriculum information, PE days and other key details. These newsletters will be sent via email and uploaded to the school website. You can also stay up to date with what's happening in class by checking the school website and Facebook page, where we regularly share photos and information about the children's learning.

A few reminders:

- Please ensure your child's belongings are clearly labelled and they have a water bottle in school each day.
- Reading books will be changed when the children have completed them.
- Weekly spelling tests will take place on Fridays.
- Children will also be receiving some English or Maths homework each week.
- PE kits to be worn on a Thursday and Friday.

If you have any questions or concerns at any point, please don't hesitate to contact us.

Thank you for your continued support.

Mr Hartnell and Mrs Jones

## More Homework Information

We understand that there are many different views about homework. However, for greater success and to promote an overall love for learning, it is integral that education takes place in all of the child's environments.

### Key Areas:

- Reading (at least 20 minutes daily) - parents or students to record/log
- Spelling Practice (we'll set fun ways to practise these!)
- English relating to class focus or seasonal events
- Maths relating to class focus

### Optional Homework for Term One:

- To find something wonderful about our world (Creation) and either take a photo, write a description or create some artwork about it.
- To start your own diary (doesn't need to be brought into school).
- To create a painting inspired by L.S. Lowry.

Mr Hartnell and Mrs Jones

# Year 3 and 4 Statutory Spellings

accident	calendar	eight	guide	mention	possession	straight
accidentally	caught	eighth	heard	minute	possible	strange
actual	centre	enough	heart	natural	potatoes	strength
actually	century	exercise	height	naughty	pressure	suppose
address	certain	experience	history	notice	probably	surprise
although	circle	experiment	imagine	occasion	promise	therefore
answer	complete	extreme	important	occasionally	purpose	though
appear	consider	famous	increase	often	quarter	thought
arrive	continue	favourite	interest	opposite	question	through
believe	decide	February	island	ordinary	recent	various
bicycle	describe	forward	knowledge	particular	regular	weight
breath	different	forwards	learn	peculiar	reign	woman
breathe	difficult	fruit	length	perhaps	remember	women
build	disappear	grammar	library	popular	sentence	
busy	early	group	material	position	separate	
business	earth	guard	medicine	possess	special	